

LED VAPOR TIGHT

FEATURES AND SPECIFICATIONS

Construction

PC material body, excellent stress and UV resistance.
Waterproof, dust-proof and anti-corrosion
4FT and 8FT Options

Electrical

Input Voltage: 120-277vac
IP 65 waterproof grade
Wattage and CCT tun-able
High lumen efficient 125lm/w on average
Motion sensor, emergency function for option

Applications

Offices, retail, supermarket, schools subway& train station, warehouse
healthcare,residential,and hospitality applications

Installation

Hanging and ceiling installation

Listing

Comply with the requirements of the Standard(s) for Luminaires
(CAN/CSA-C22.2No.250.0) and are identified with the cETL

Warranty

5-year limited warranty

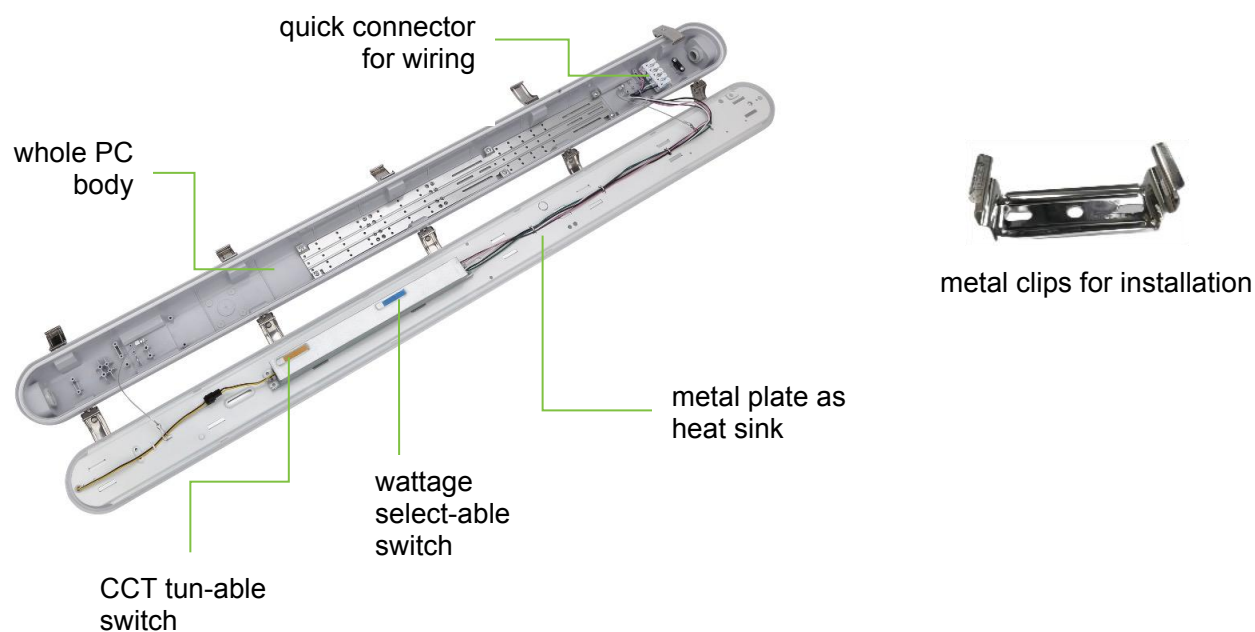


Specs at a Glance	* Nominal Wattage (Switchable)	
Configuration	J-VT02-4FT	J-VT02-8FT
CCT (K)	5CCT Selectable:3500K-4000K-5000K-5700K-6500K	
Wattage (W)*	25W/30W/35W/40W/50W	40W/50W/60W/70W/80W
Efficacy (LPW)	125lm/w	
Size	4FT	8FT
CRI	>80	
Input Voltage	120-277V	
Operating Temp	-20°C-45°C	
Certifications	ETL DLC	ETL
Warranty	5-year limited warranty	5-year limited warranty

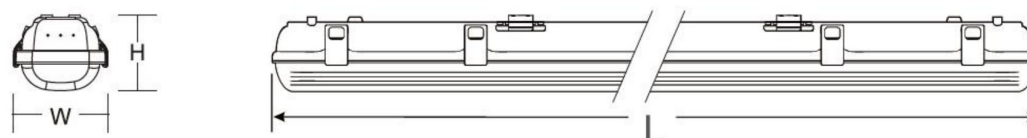
ORDERING GIUDE

Example: J--VT02

Brand	Size	Wattae xxxW	CCT XX	Blank xx	Input Voltage
JEN Lighting	4F 4FT 8F 8FT	50 25W-30W-35W- 40W-50W 80 40W-50W-60W- 70W-80W	3500-4000-5000- 5700-6500K S CCT and Wattage Selectable	Blank Motion Sensor &Emergency Backup M Motion Sensor EM Emergency Backup N Non-montion & emergency	120-277Vac



DIMENSION



Length	Width	Height
1200mm/47"	95mm/3.74"	80mm/3.15"
2400mm/94"	95mm/3.74"	84mm/3.15"

ACCESSORIES



Metal clips

- Stainless steel material
- 2pcs for 4FT light, 4pcs for 8FT light



Connection terminal

- waterproof IP65
- Lead the connection wires inside the lamp



Metal hook

- Stainless steel material
- For hanging light
- 2pcs for 4FT light, 4pcs for 8FT light

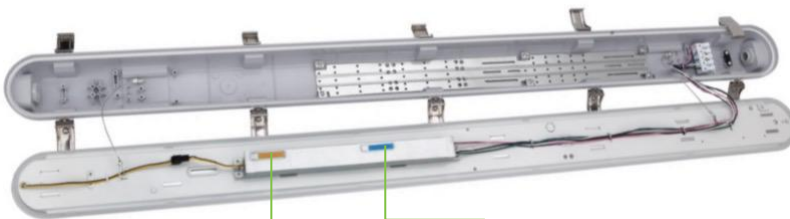


Screws bag

- All the screws will be used for installation are packed in this bag

INSTALLATIONS

※Slide the switches on the driver to select the desired CCT and wattage before installation.

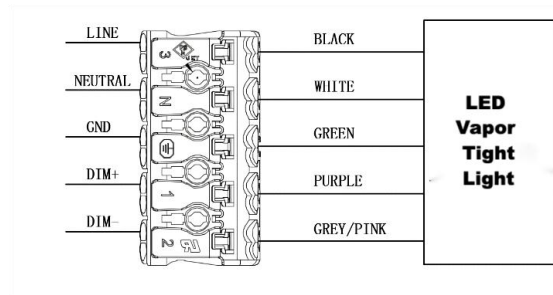


CCT tun-able switch

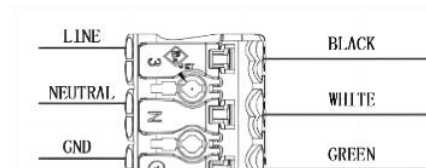
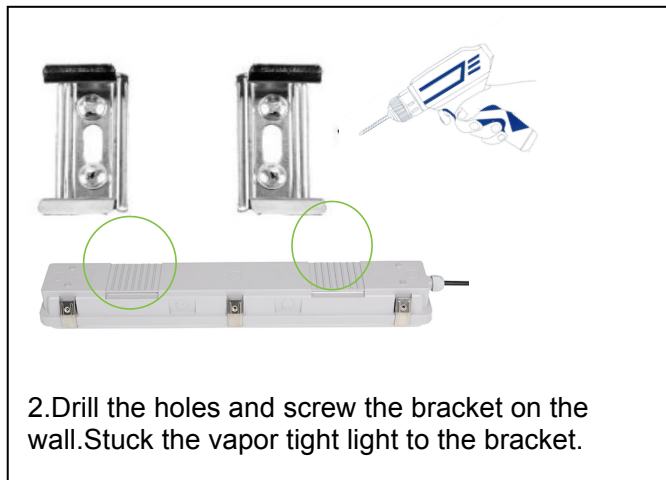
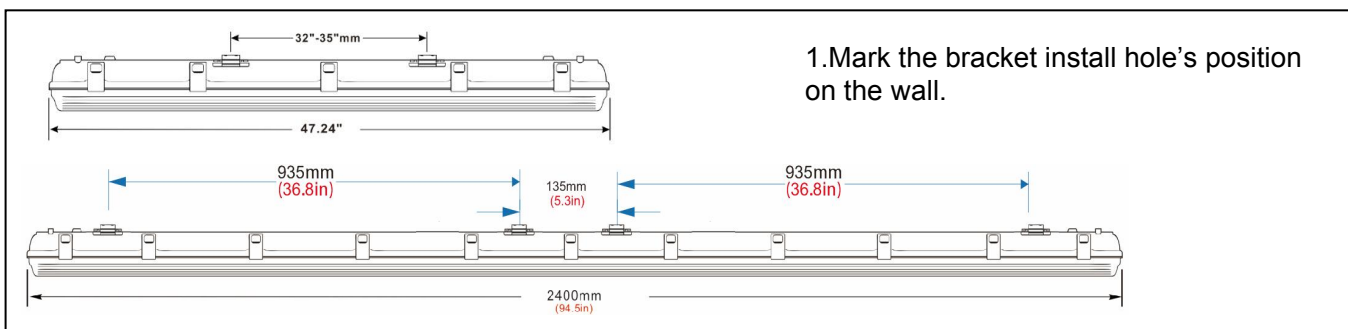
wattage select-able switch

Dimming Wiring Diagrams

This vapor tight light is compatible with 0-10V output dimming controls.



Surface Mounting



4. Connect the light to the electric supply, make sure the L/N/GND connect correct

PACKING INFO



Size	QTY/CTN	Carton size (inch)	N. W (LBS)	GW (LBS)	QTY/20GP	QTY/40GP
4FT	6pcs	47.83"*12.6"*7.87"	11.2	14	2166	4404
8FT	6pcs	94.88"*12.64"*8.46"	23.4	28.59	1014	2058